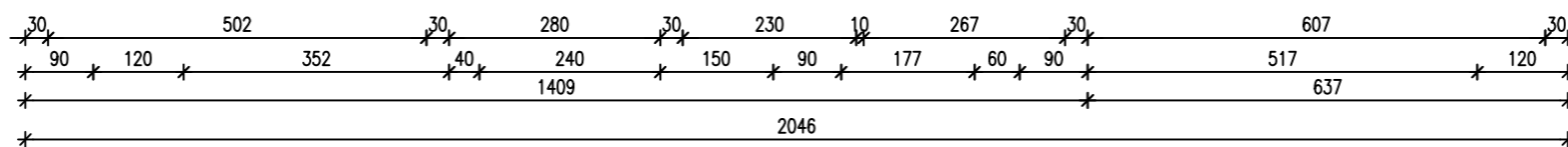
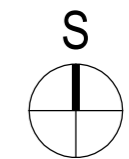
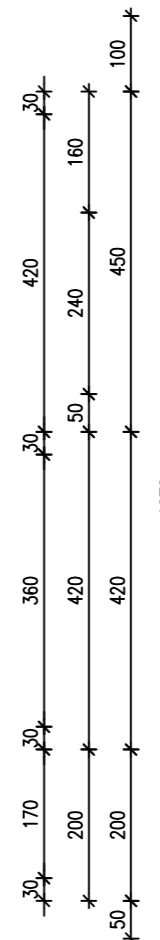
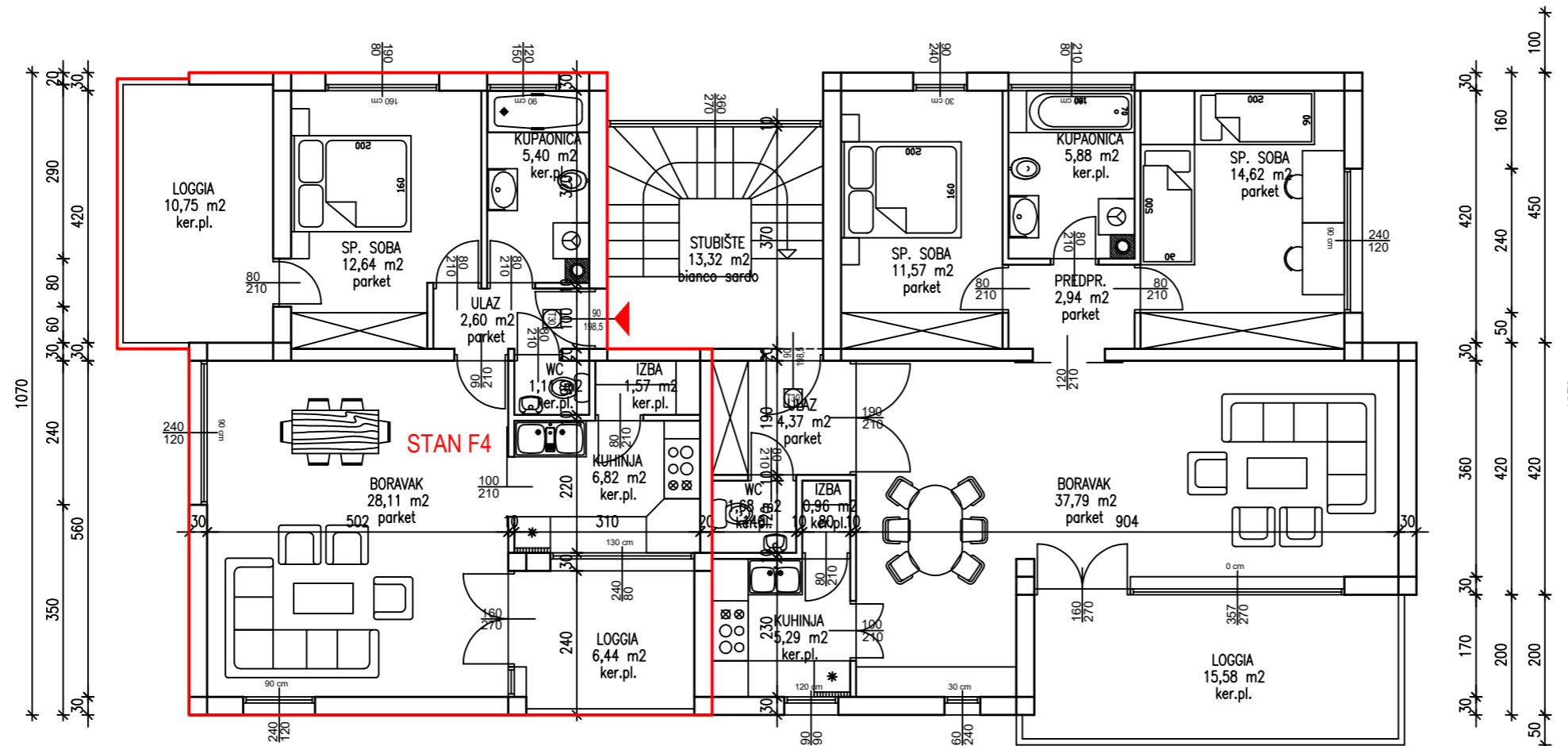
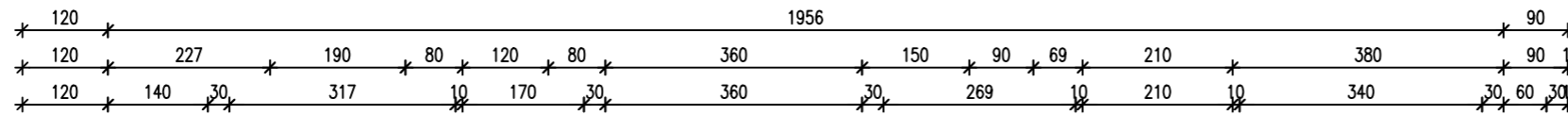


STAN F4 (P=71,22 m²)

ZGRADA "F"
TLOCRT 1. KATA
MJ. 1:100



PRIZEMLJE - STAN F4				
R.br.	PROSTORIJA	NETTO POVRŠINA (m ²)	KOEF.	PRODAJNA POVRŠINA (m ²)
1	Ulaz	2.99	1.0	2.99
2	WC	1.13		1.13
3	Izba	1.58		1.58
4	Kuhinja	6.74		6.74
5	Dn. boravak + blagovaonica	27.51		27.51
6	Kupaonica	5.27		5.27
7	Soba	12.35		12.35
8	UKUPNO:	57.57		57.57
	Loggia 1			
	natkriveni dio	6.02	0.75	4.52
	nenatkriveni dio	4.73	0.25	1.18
	ukupno loggia 1:	10.75		5.70
9	Loggia 2	6.44	0.75	4.83
	Vanjsko parkirno mjesto PM4	12.50	0.25	3.13
	STAN F4 UKUPNO:	87.26		71.22

