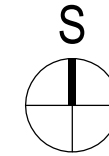
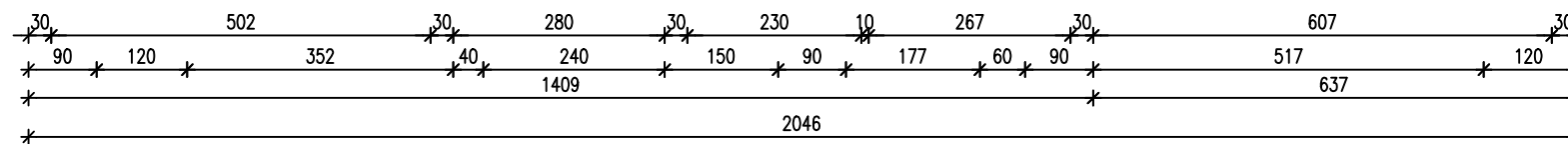
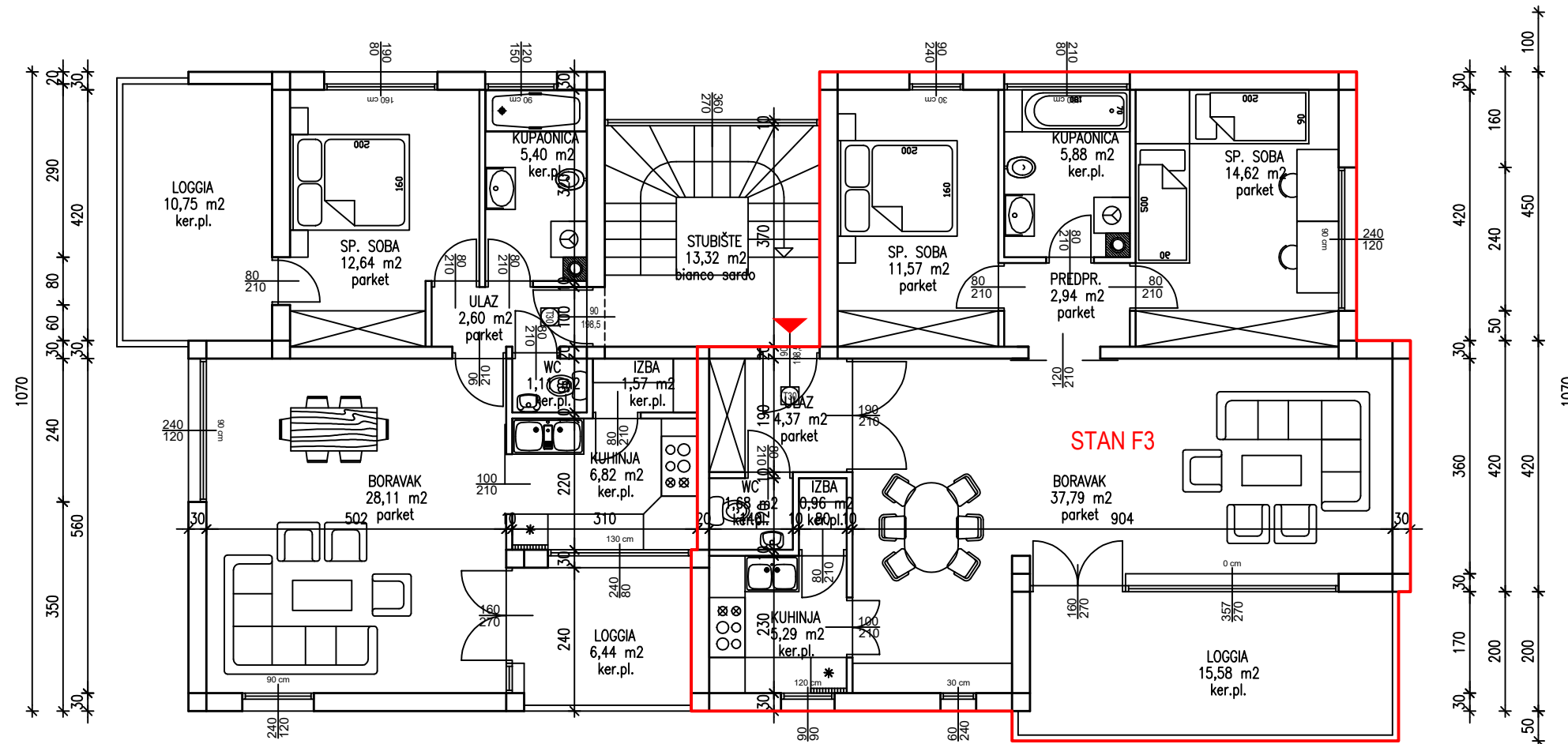
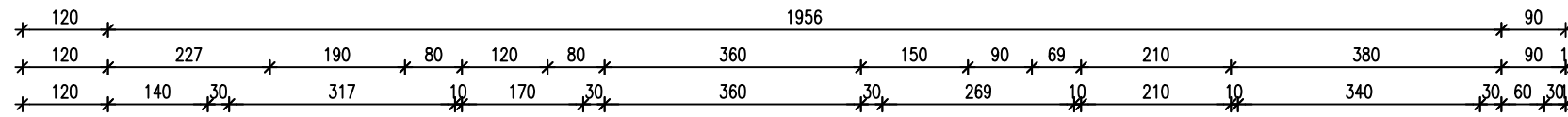


# STAN F3 (P=99,27 m<sup>2</sup>)

ZGRADA "F"  
TLOCRT 1. KATA  
MJ. 1:100



1. KAT - STAN F3				
R.br.	PROSTORIJA	NETTO POVRŠINA (m <sup>2</sup> )	KOEF.	PRODAJNA POVRŠINA (m <sup>2</sup> )
1	Ulaz	4.51	1.0	4.51
2	WC	1.66		1.66
3	Izba	1.01		1.01
4	Kuhinja	5.27		5.27
5	Dn. boravak + blagovaonica	37.63		37.63
6	Predprostor	3.03		3.03
7	Soba	14.64		14.64
8	Kupaonica	5.81		5.81
9	Soba	11.69		11.69
<b>UKUPNO:</b>		<b>85.25</b>		<b>85.25</b>
10	Loggia	14.52	0.75	10.89
Vanjsko parkirno mjesto PM3		12.50	0.25	3.13
<b>STAN F3 UKUPNO:</b>		<b>112.27</b>		<b>99.27</b>

