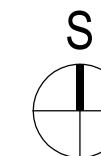
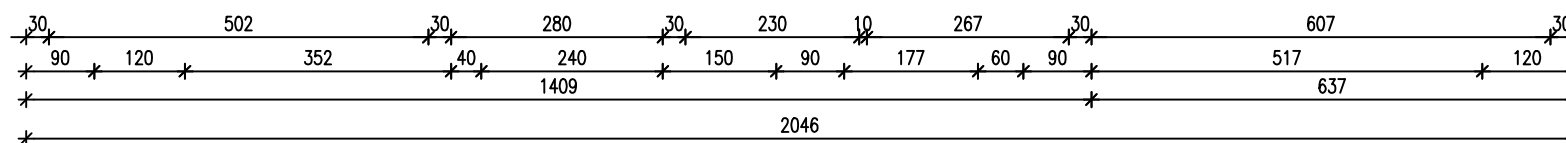
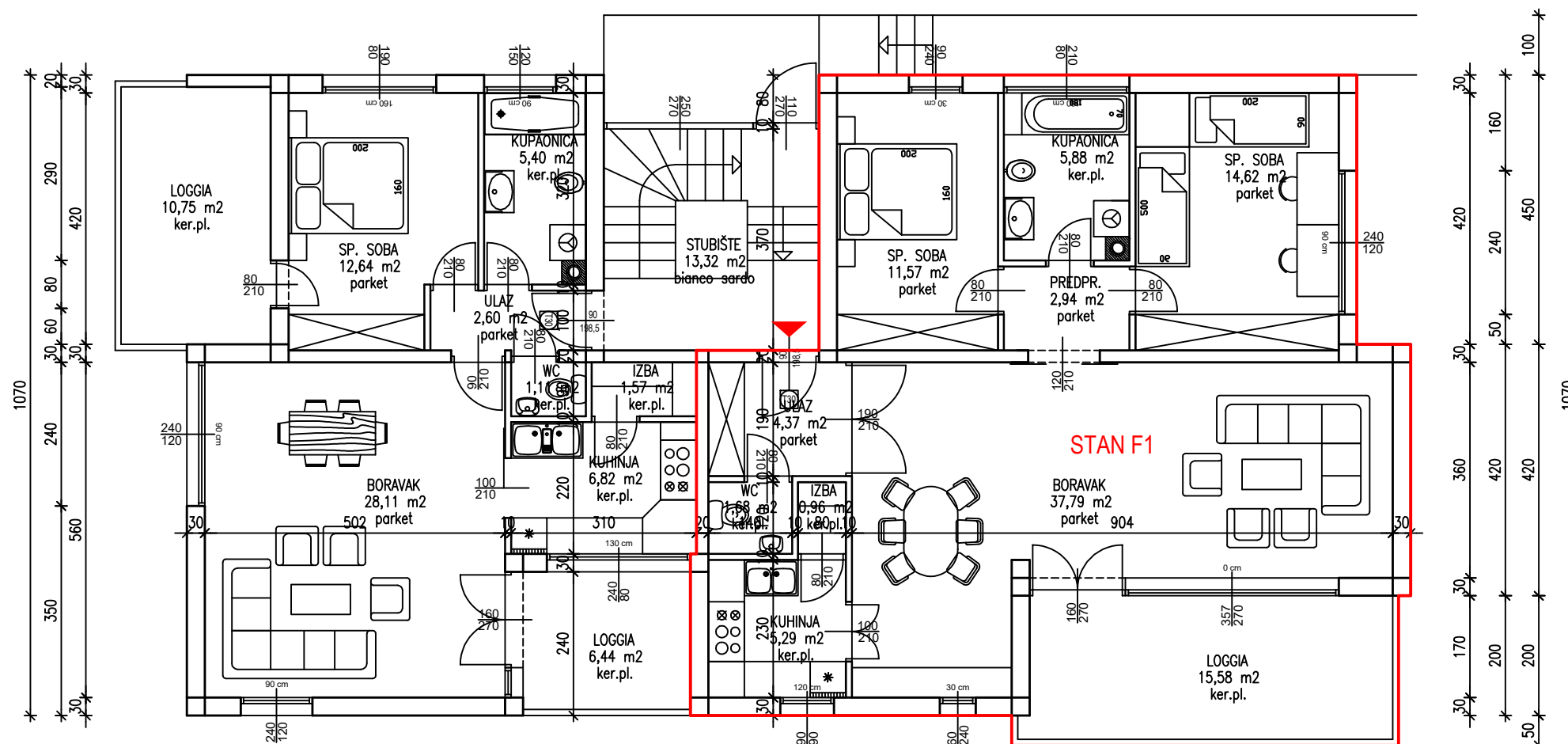
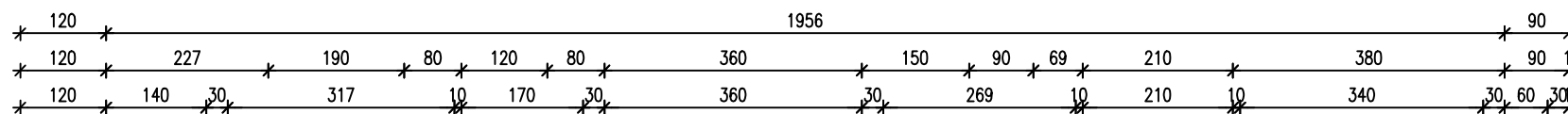


STAN F1 (P=99,29 m²)

ZGRADA "F"
TLOCRT PRIZEMLJA

MJ. 1:100



PRIZEMLJE - STAN F1				
R.br.	PROSTORIJA	NETTO POVRŠINA (m ²)	KOEF.	PRODAJNA POVRŠINA (m ²)
1	Ulaz	4.55	1.0	4.55
2	WC	1.66		1.66
3	Izba	1.02		1.02
4	Kuhinja	5.29		5.29
5	Dn.boravak + blagovaonica	37.89		37.89
6	Predprostor	2.98		2.98
7	Soba	14.58		14.58
8	Kupaonica	5.80		5.80
9	Soba	11.50		11.50
UKUPNO:		85.27		85.27
10	Loggia	14.52	0.75	10.89
Vanjsko parkirno mjesto PM1		12.50	0.25	3.13
STAN F1 UKUPNO:		112.29		99.29

